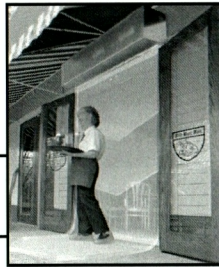


## OTHER CURTRON PRODUCTS



**POLAR-PRO™  
SWINGING DOORS**



**AIR DOORS**



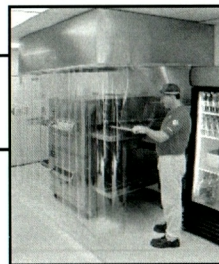
**CASER  
COOLER CURTAINS**



**M-SERIES  
STRIP DOORS**



**RACK COVERS**



**COOLKEEPER™  
OVEN CURTAINS**

*Make Food **SAFETY** Products  
Your Number One Priority!*

**Curtron** Products  
a division of TMI, LLC

**800•833•5005**

Curtron Products • 5350 Campbells Run Road • Pittsburgh, PA 15205-9738 • 412.787.9750  
Fax: 412.787.3665 • Web Site: [www.curtronproducts.com](http://www.curtronproducts.com) • E-Mail: [info@curtronproducts.com](mailto:info@curtronproducts.com)

# CURTRONIZER™ STRIP DOOR

## READ ME FIRST INSTALLATION INSTRUCTIONS



*Make Food **SAFETY** Products  
Your Number One Priority!*

### YOUR MODEL NUMBER IS . . .

- |                                      |                                       |
|--------------------------------------|---------------------------------------|
| <input type="checkbox"/> CZ-6-S-4080 | <input type="checkbox"/> CZ-6-PR-4080 |
| <input type="checkbox"/> CZ-6-S-4086 | <input type="checkbox"/> CZ-6-PR-4086 |
| <input type="checkbox"/> CZ-8-S-4080 | <input type="checkbox"/> CZ-8-PR-4080 |
| <input type="checkbox"/> CZ-8-S-4086 | <input type="checkbox"/> CZ-8-PR-4086 |

**Curtron** Products  
a division of TMI, LLC



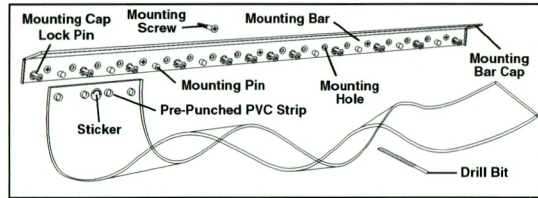
# GETTING STARTED...

Remove the Mounting Bar. Do not remove the PVC strips from the carton until ready for installation.

**NOTE:** When multiple strip doors are ordered, all carton(s) will be properly tagged.

All strip doors are shipped complete with the following:

- 1 - 40" Mounting Bar
- 5 - 3/16" x 1 1/4" Mounting Screws
- 1 - 1/8" Drill Bit
- Pre-Punched PVC Strips
  - 10 Strips with Model CZ-6
  - 7 Strips with Model CZ-8

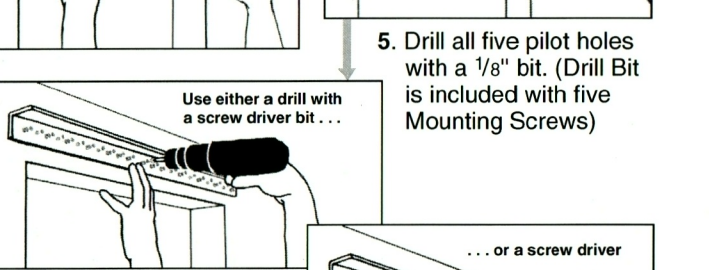
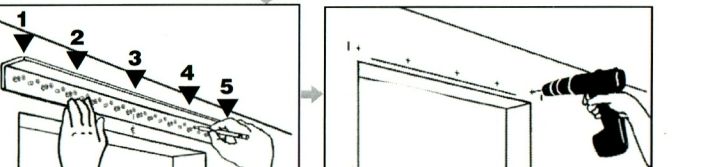
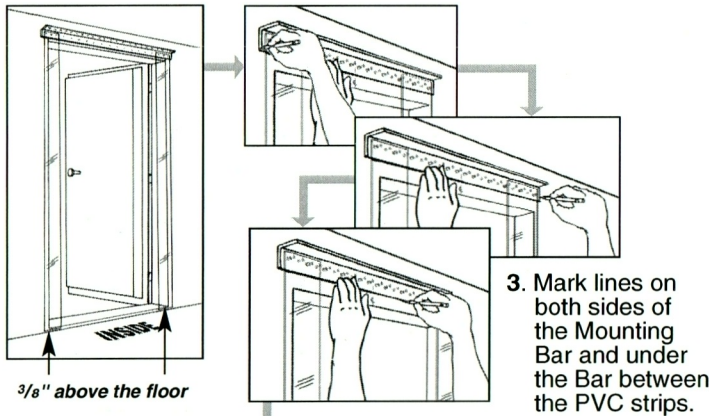


## FIRST: ATTACH THE MOUNTING BAR

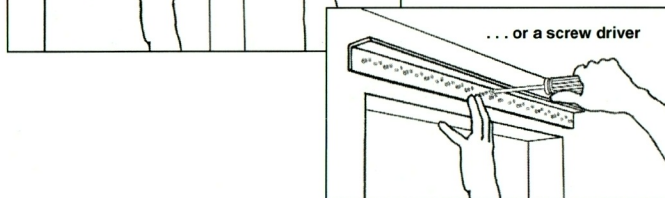
### IMPORTANT:

*Install your Curtronizer on the inside or interior of the cooler/freezer.*

1. Temporarily attach a PVC strip to both ends of the Mounting Bar.
2. Center and level the bar above the opening so the strips are 3/8" above the floor.
4. Remove the PVC strip, replace the bar along the lines and mark five evenly spaced mounting holes.



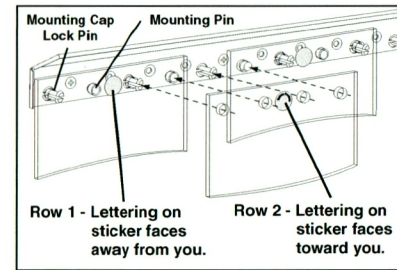
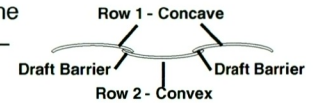
6. Attach the Mounting Bar using the five supplied Mounting Screws.



5. Drill all five pilot holes with a 1/8" bit. (Drill Bit is included with five Mounting Screws)

## SECOND: HANG THE PVC STRIPS

**IMPORTANT:** All PVC strips have a natural curve across the width of the material. When hung properly (row 1: concave—row 2: convex), it creates a barrier against drafts.



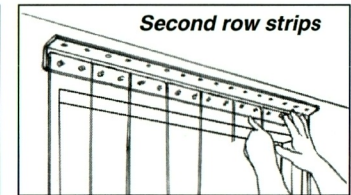
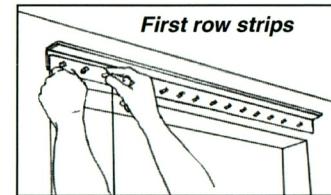
Stickers have been applied to each PVC strip.

Attach each PVC Strip by pushing the pre-punched holes over the Mounting Pins and the Mounting Cap Lock Pins on the Mounting Bar.

### IMPORTANT:

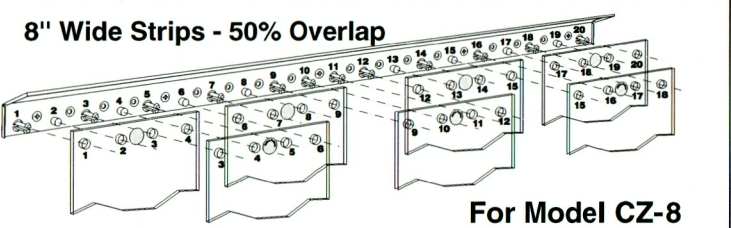
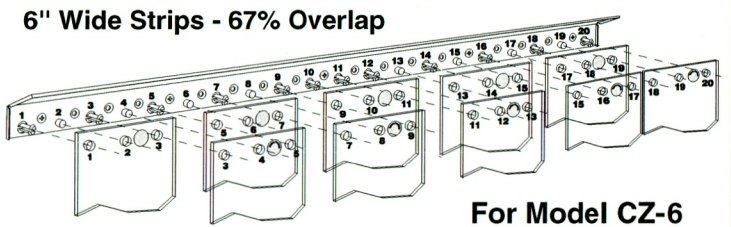
**First row strips** - Lettering on the sticker should face away from you.

**Second row strips** - Lettering on the sticker should face toward you.



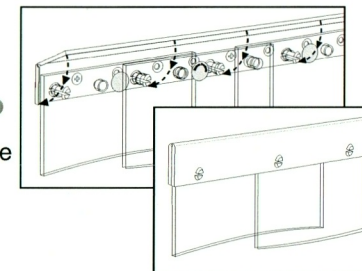
## Overlap Configurations

Your model number is marked on the front of this booklet. Use the proper overlap configuration for that model number. Pin numbers and strip hole numbers should lineup.



## THIRD: CLOSE THE CAP

Finally push the Mounting Bar Cap shut.



## REPLACING STRIPS

Use a wide spade screw driver to pry open Cap Strip at each Mounting Cap Lock Pin.

